

# MKB 29 Scotch Pattern

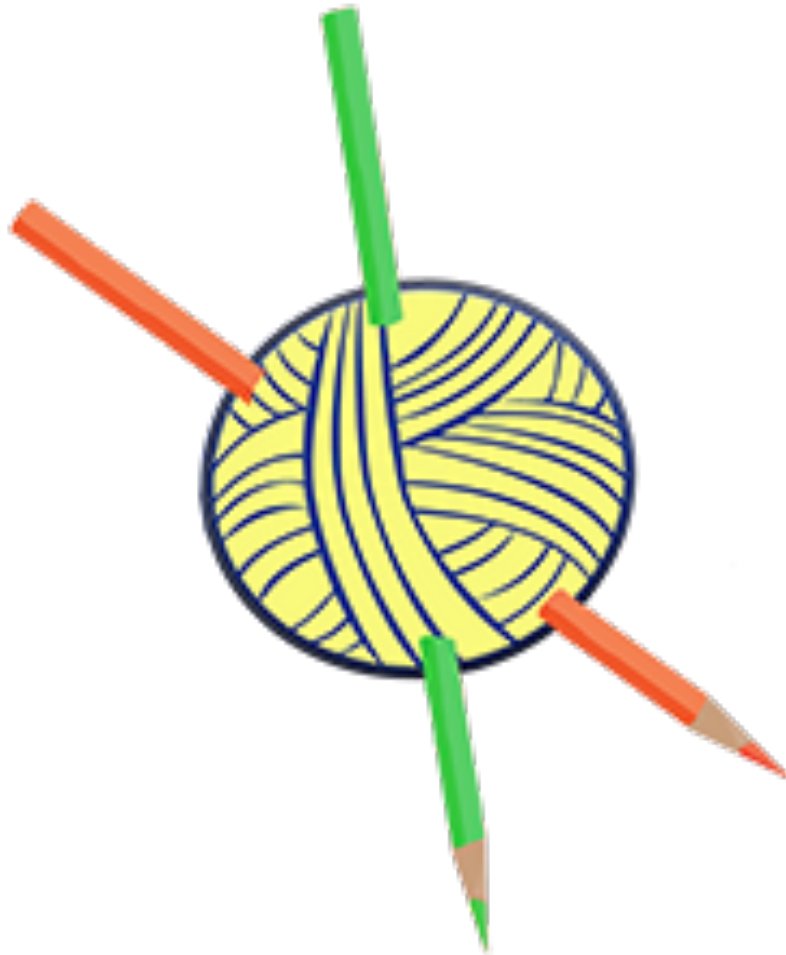
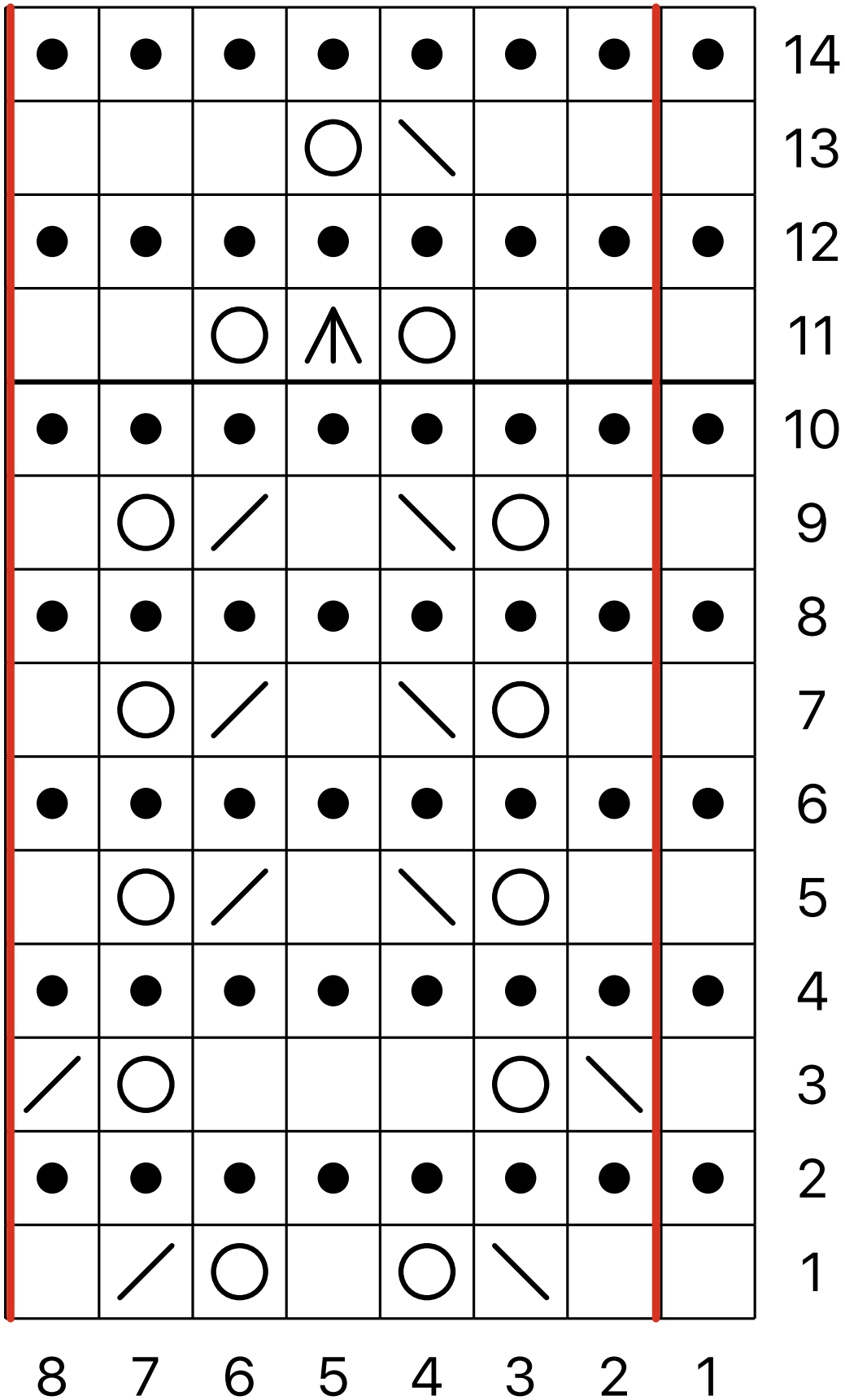


Chart 1



Key for Chart 1

Symbol	Right Side	Wrong Side
	<b>k</b> knit	<b>p</b> purl
	<b>p</b> purl	<b>k</b> knit
	<b>k2tog</b> knit 2 together	<b>p2tog</b> purl 2 together
	<b>ssk</b> slip, slip, knit	<b>ssp</b> slip, slip, purl
	<b>cdd</b> sl2, k1, p2sso	<b>cddp</b> sl2, p1, p2sso
	<b>yo</b> yarn over	<b>yo</b> yarn over

*Written Instructions for Chart 1*

Row 1: k, \*k, ssk, yo, k, yo, k2tog, k, rep from \* 1 times.

Row 2: \*k7, rep from \* 1 times, k.

Row 3: k, \*ssk, yo, k3, yo, k2tog, rep from \* 1 times.

Row 4: \*k7, rep from \* 1 times, k.

Row 5: k, \*k, yo, ssk, k, k2tog, yo, k, rep from \* 1 times.

Row 6: \*k7, rep from \* 1 times, k.

Row 7: k, \*k, yo, ssk, k, k2tog, yo, k, rep from \* 1 times.

Row 8: \*k7, rep from \* 1 times, k.

Row 9: k, \*k, yo, ssk, k, k2tog, yo, k, rep from \* 1 times.

Row 10: \*k7, rep from \* 1 times, k.

Row 11: k, \*k2, yo, cdd, yo, k2, rep from \* 1 times.

Row 12: \*k7, rep from \* 1 times, k.

Row 13: k, \*k2, ssk, yo, k3, rep from \* 1 times.

Row 14: \*k7, rep from \* 1 times, k.