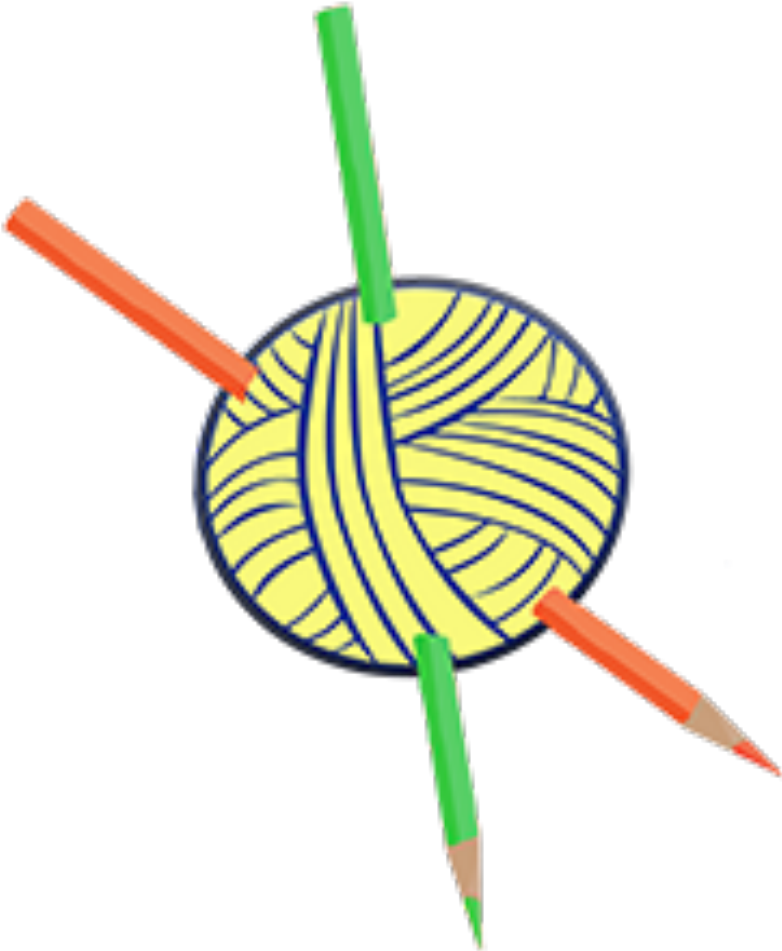
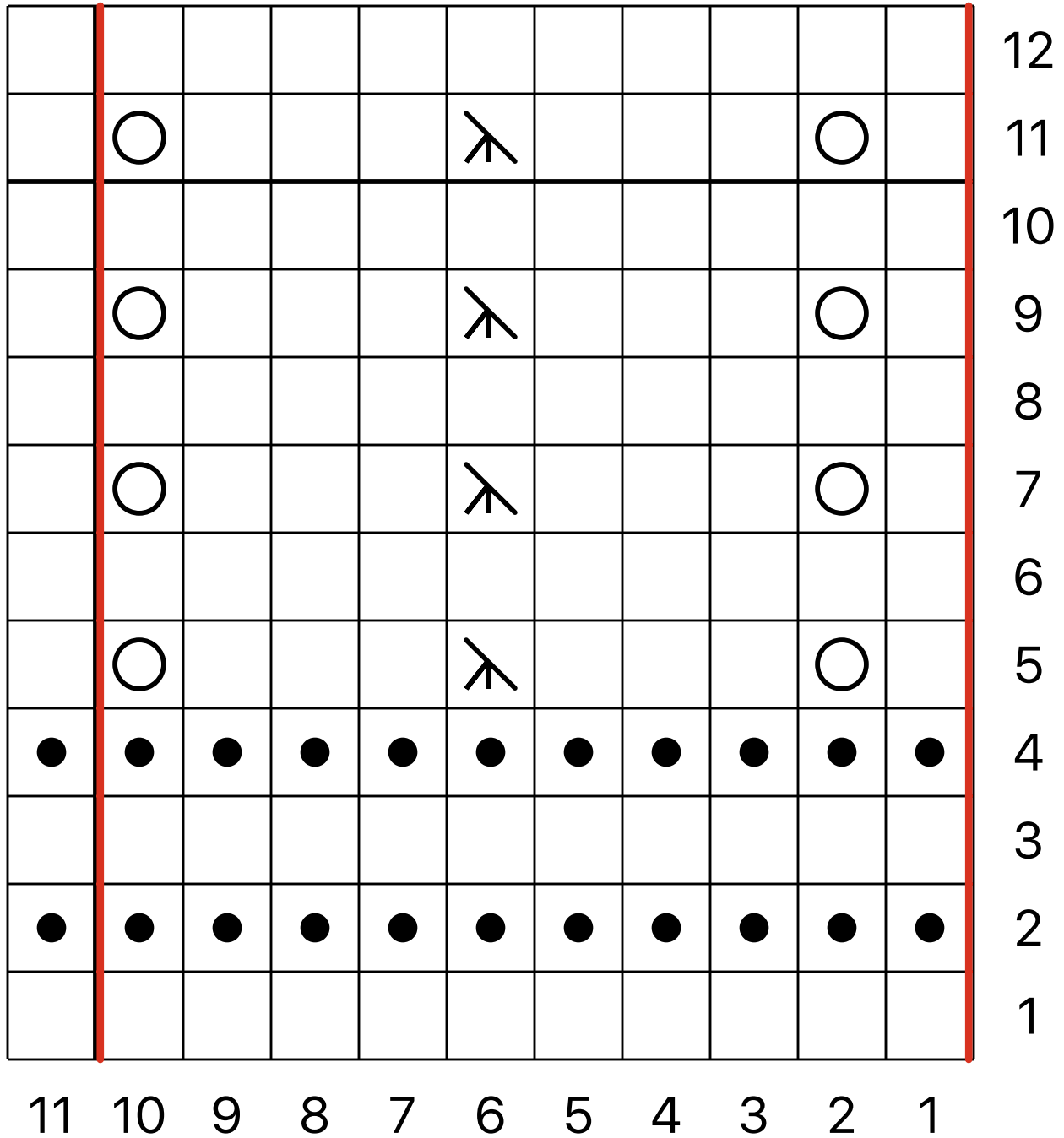


MKB 28 Gothic Pattern



MKB 28: Gothic Pattern



Key for MKB 28: Gothic Pattern

Symbol	Right Side	Wrong Side
	k knit	p purl
	p purl	k knit
	sk2p sl1, k2tog, pss0	sp2p sl1 wyif, p2tog tbl, pss0
	yo yarn over	yo yarn over

Written Instructions for MKB 28: Gothic Pattern

Row 1: *k10, rep from * 1 times, k.
Row 2: k, *k10, rep from * 1 times.
Row 3: *k10, rep from * 1 times, k.
Row 4: k, *k10, rep from * 1 times.
Row 5: *k, yo, k3, sk2p, k3, yo, rep from * 1 times, k.
Row 6: p, *p10, rep from * 1 times.
Row 7: *k, yo, k3, sk2p, k3, yo, rep from * 1 times, k.
Row 8: p, *p10, rep from * 1 times.
Row 9: *k, yo, k3, sk2p, k3, yo, rep from * 1 times, k.
Row 10: p, *p10, rep from * 1 times.
Row 11: *k, yo, k3, sk2p, k3, yo, rep from * 1 times, k.
Row 12: p, *p10, rep from * 1 times.