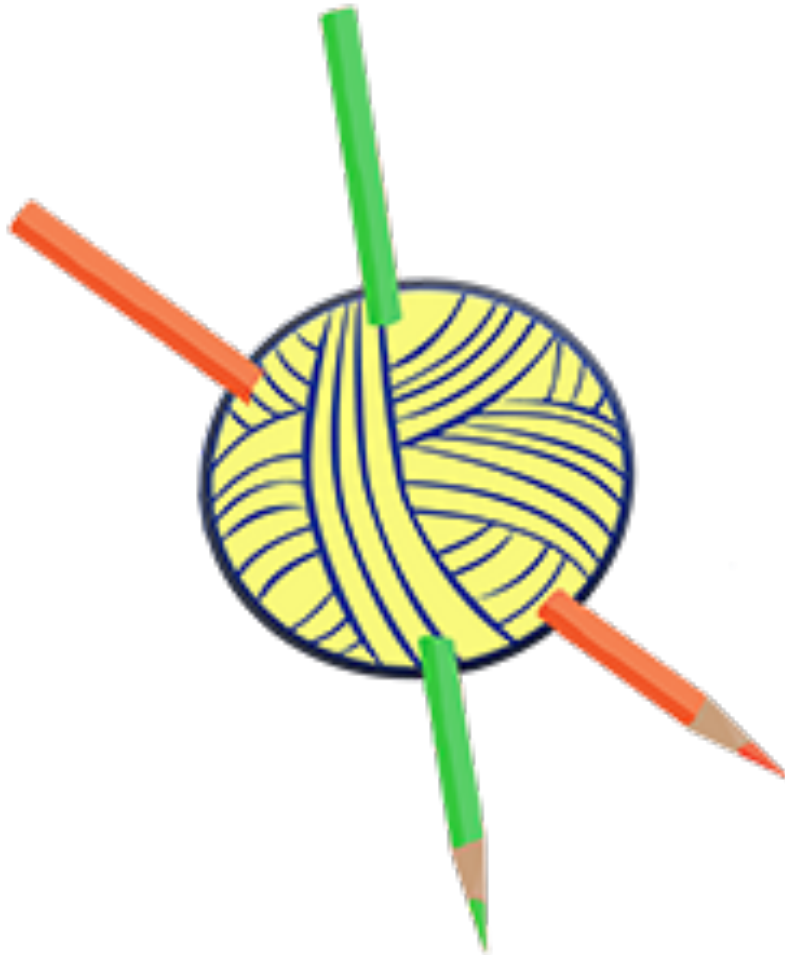
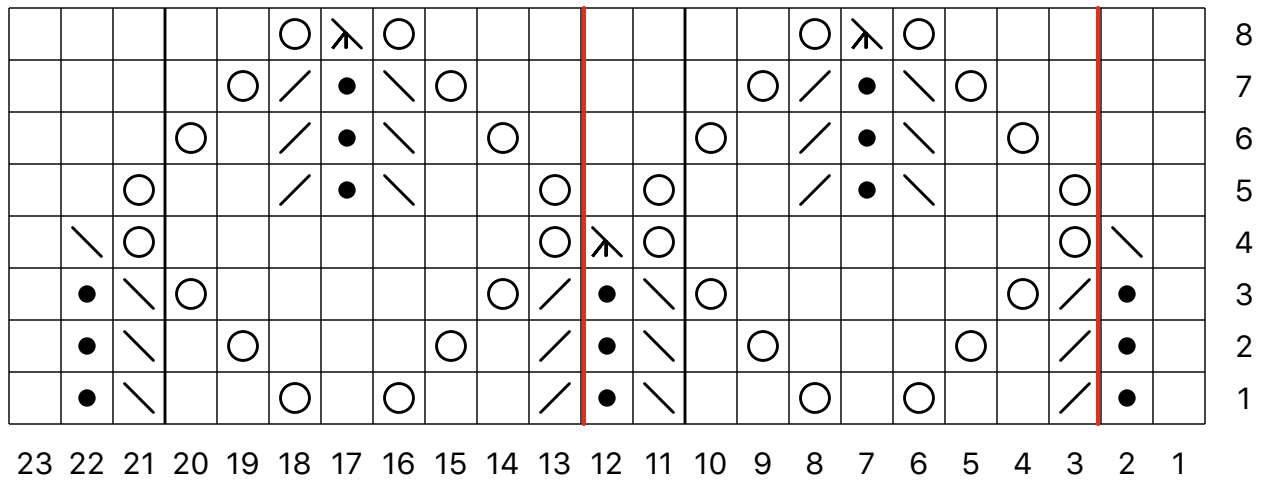


## *II Rose Leaf*



*II Rose Leaf*



*Key for Il Rose Leaf*

Symbol	Right Side	Wrong Side
	<b>k</b> knit	<b>p</b> purl
	<b>p</b> purl	<b>k</b> knit
	<b>k2tog</b> knit 2 together	<b>p2tog</b> purl 2 together
	<b>ssk</b> slip, slip, knit	<b>ssp</b> slip, slip, purl
	<b>sk2p</b> sl1, k2tog, pss0	<b>sp2p</b> sl1 wyif, p2tog tbl, pss0
	<b>yo</b> yarn over	<b>yo</b> yarn over

*Written Instructions for Il Rose Leaf*

Row 1: k, p, \*k2tog, k2, yo, k, yo, k2, ssk, p, rep from \* 0 times, k2tog, k2, yo, k, yo, k2, ssk, p, k.

Row 2: p, k, ssp, p, yo, p3, yo, p, p2tog, \*k, ssp, p, yo, p3, yo, p, p2tog, rep from \* 0 times, k, p.

Row 3: k, p, \*k2tog, yo, k5, yo, ssk, p, rep from \* 0 times, k2tog, yo, k5, yo, ssk, p, k.

Row 4: p, ssp, yo, p7, yo, \*sp2p, yo, p7, yo, rep from \* 0 times, ssp, p.

Row 5: k2, \*yo, k2, ssk, p, k2tog, k2, yo, k, rep from \* 0 times, yo, k2, ssk, p, k2tog, k2, yo, k2.

Row 6: p3, yo, p, p2tog, k, ssp, p, yo, p, \*p2, yo, p, p2tog, k, ssp, p, yo, p, rep from \* 0 times, p2.

Row 7: k2, \*k2, yo, ssk, p, k2tog, yo, k3, rep from \* 0 times, k2, yo, ssk, p, k2tog, yo, k4.

Row 8: p5, yo, sp2p, yo, p3, \*p4, yo, sp2p, yo, p3, rep from \* 0 times, p2.